

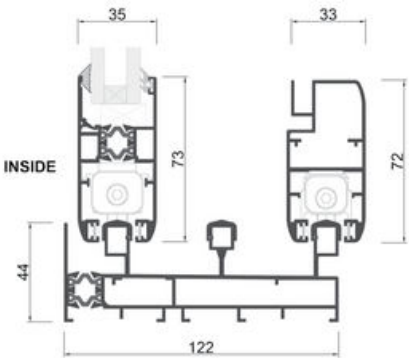
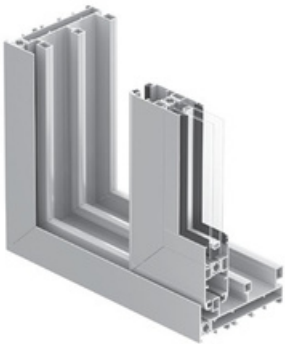
EC95TB

EC95TB designed with flexibility in mind this solution allows greater connection between inside living space and outside nature. It creates generous openings and allows maximum transparency and light penetration.

Thermally broken systems have been designed for improved energy efficiency. Our commitment to environmentally sustainable window solutions delivers you greater comfort of living and increased savings in your heating and cooling costs.

Energy Rating WERS

| GLAZING | U | SHGC |
|--|-----|------|
| 6mm Clear Toughened / 10mm Argon / 6mm Clear Toughened | 3.6 | 0.55 |
| 6mm Energy Tech / 10mm Argon / 6mm Clear Toughened | 3.0 | 0.47 |
| 6mm Performa Tech / 12mm Argon / 4mm Clear Toughened | 2.7 | 0.25 |
| 6mm Evantage / 12mm Argon / 6mm Clear Toughened | 3.1 | 0.43 |
| 6mm Sunergy Clear / 10mm Argon / 6mm Clear Toughened | 3.2 | 0.39 |
| 6.38mm Clear Comfort Plus / 10mm Argon / 6mm Clear Toughened | 2.9 | 0.46 |
| 6mm LightBridge / 10mm Argon / 6mm Clear Toughened | 2.8 | 0.45 |



Opening Styles

| | | | | |
|------------------|---------------|--|--|-----------------|
| | | | | |
| SLIDING DOOR | STACKING DOOR | | | BI-PARTING DOOR |
| Max Panel Width | 2000 | | | |
| Max Panel Height | 3000 | | | |
| Max Panel Weight | 150kg | | | |
| Track Options | 2 / 3 / 4 / 5 | | | |